



1984 Hinterhoeller Nonsuch 36

Boat Type: Cruiser

Address: Essex, CT, US

Price: \$65,000



OVERVIEW

The Nonsuch 36 features incredible interior space with live-a-board potential. Nonsuch's are sought after for both their easy to sail characteristics and performance.

Gone Away is a clean 1984 Nonsuch 36 with a hunter green awlgripped hull and beige boot stripe, plus a new carbon fiber mast, a teak interior and new re-upholstered interior cushions with Sunbrella fabrics. Her original 52 h.p. Westerbeke engine is well maintained and the owners have kept her in ready to sail away condition.

SPECIFICATIONS

Basic Information

Manufacturer:	Hinterhoeller	Vessel Name:	GONE AWAY
Model:	Nonsuch 36	Boat Type:	Cruiser
Year:	1984	Hull Material:	Fiberglass
Category:	Sail	Hull Type:	Displacement
Condition:	Used	Hull Color:	Green
Location:	Essex, CT, US	Designer:	Mark Ellis
Available for sale in U.S. waters:	Yes	Flag of Registry:	US

Dimensions & Weight

Length:	36 ft - 10.97 meter	Draft - max:	4 ft 7 in - 1.4 meter
LOA:	12 ft 6 in - 3.81 meter	Bridge Clearance:	68 ft - 20.73 meter
Beam:	-	Dry Weight:	17000 ft - 5181.6 meter

Engine

Make:	Westerbeke	Engine Type:	Inboard
Model:		Drive Type:	V Drive
Engine(s):	1	Fuel Type:	Diesel
Hours:	4263	Horsepower:	52 (Individual), 52 (combined)
Cruise Speed:	6 MPH	Max Speed:	7 MPH
Range:	-	Joystick Control:	No

Tank Capacities

Fuel Tank:	65 gallons - 1 tank(s)	Holding Tank:	25 gallons - 1 tank(s)
Fresh Water Tank:	90 gallons - 2 tank(s)		

Accommodations

Total Cabins:	2	Crew Cabins:	-
Total Berths:	4	Crew Berths:	-
Total Sleeps:	6	Crew Sleeps:	-
Total Heads:	1	Crew Heads:	-
Captains Cabin:	-		

DESCRIPTIONS

ACCOMMODATIONS

"Gone Away" can sleep a total of six adults in a three stateroom lay-out, including the forward owner cabin, the main salon and an aft double quarter berth.

The owner's stateroom is forward with a spacious double bunk offset to port. Just to starboard is a vanity with sink and mirror. There is an enclosed locker over the berth, and an enclosed blanket shelf, A large hanging locker and a variety of drawers and shelves are starboard.

Next aft is a very large functional head space featuring a manual toilet, a stall shower, a large vanity with mirror and plenty of dry lockers, drawers and storage.

The main salon features two settees port and starboard and a very large dining table. To the portside is L-shaped settee with shelves & lockers behind. To starboard is a straight settee with an open storage shelf and two lockers behind.

Next aft to port is a very large functional head space featuring a manual toilet, a stall shower, a large vanity with mirror and plenty of dry lockers, drawers and storage. Just aft of the head is the navigation station with a fold away seat. Across to starboard is a spacious double quarterberth. A privacy door makes the aft area private for guests.

The interior is finely crafted and hand rubbed oiled teak and a bright teak and holly cabin sole. Some of the features and more recent upgrades include:

- New teak cabin doors
- New Excel hot water heater
- Re-upholstered cushions and mattresses - Sunbrella fabric
- Port screens new
- Ceiling lights lenses replaced

GALLEY

Gone Away features a large U-shaped galley is to starboard. This galley features:

- Three burner propane stove with oven
- Deep stainless steel double sinks
- Hot and cold pressure water
- A large insulated refrigerated ice box
- There are drawers and cabinets above and below for stowage of food, utensil, glassware and pots and pan storage.

Sail

- Mainsail is UK Halsey with "customized" stack pack

Rigging

- Carbon fiber mast and wishbone boom
- Spar-Tite collar
- Re-engineered mast step and pin
- Self-tailing electric halyard winch (port side)

Canvas

- Beige dodger
- Mainsail cover
- Helm cover

ELECTRONICS

- Chartplotter/GPS
- Radar
- Autohelm 6000 wheel autopilot
- Raymarine T101 wireless wind instrument
- DMI depth instrument
- Standard VHF radio

- 6" Ritchie compass
- Windex

ELECTRICAL

- 12 volt (DC) electrical system with circuit breaker panel
- battery selector switch
- battery condition indicator
- automatic bilge pump
- 110 volt (AC) electrical system with new circuit breaker panel
- shore power cable
- 2 - 30A 110 volt outlets
- 110 volt outlets

MECHANICAL

- 52 h.p. Westerbeke four cylinder freshwater cooled diesel engine
- Engine hours: 4,263 hours
- Single lever engine control on pedestal
- New transmission control cable
- New sound proofing in engine compartment
- Bilge blower
- Manual bilge pump,
- Engine alarm system.
- Three-bladed bronze feathering propeller

Safety

- Life Sling 2
- Radar reflector
- Fire extinguishers
- Swim platform
- Stainless steel retractable swim platform ladder
- Xintex Fireboy LPG detector

Anchoring and Docking

- CQR Anchor 60lb with chain and rode
- Custom bow pulpit with sprit and double anchor rollers
- Electric anchor windlass
- Teak rub rail with stainless steel strake
- Fenders
- Dock lines

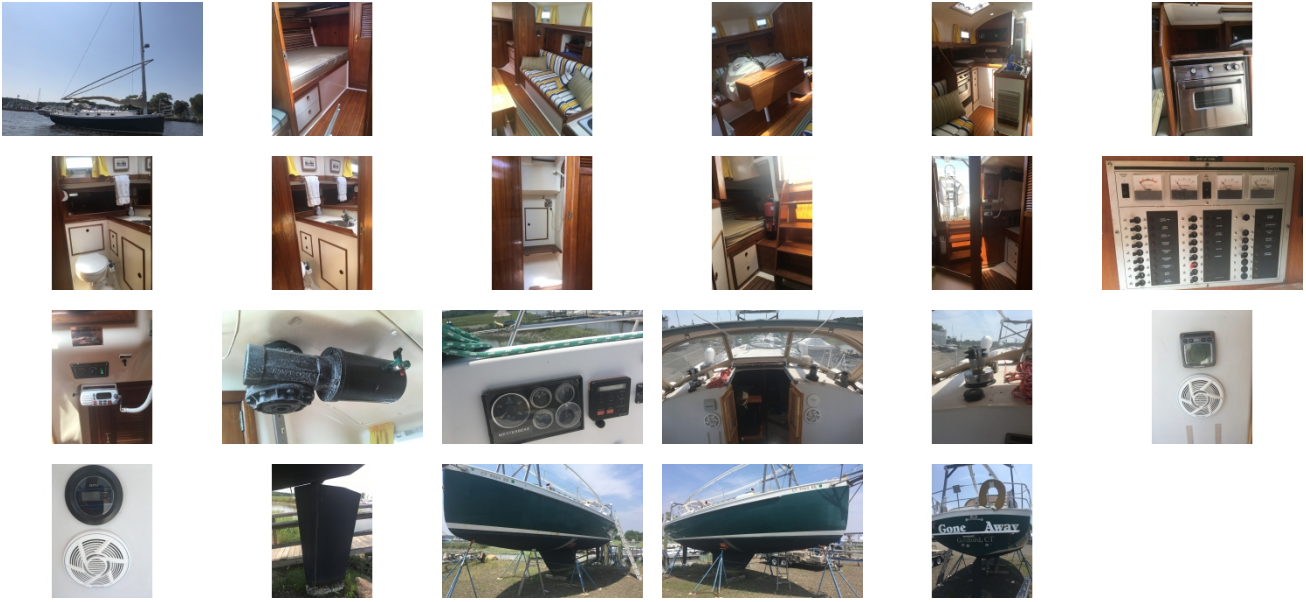
Other

- Edson Stainless Steel Destroyer Wheel
- New teak cabin doors

DISCLAIMER

The Company offers the details of this vessel in good faith but cannot guarantee or warrant the accuracy of this information nor warrant the condition of the vessel. A buyer should instruct his agents, or his surveyors, to investigate such details as the buyer desires validated. This vessel is offered subject to prior sale, price change, or withdrawal without notice.

GALLERY



LOCATION MAP



RICHARD NOLAN
Eastland Yachts
P.O. Box 558
Essex, CT, US
Office: 860-767-8224
molan@eastlandyachts.com

